

# Element

Technical Information Pack

Healthcare

Hospitality

Marine

Residential

Workplace

# YARWOOD

---

## Faux Leather

# Element Faux Leather Technical Information Pack

We look forward to working with you as your faux leather supplier, here are the main advantages of working with us:

Accredited to ISO9001, Yarwood provides a wide range of leather and faux leather ranges which are suitable for the domestic, aviation, automotive, contract and office upholstery sectors.

As well as supplying leather and faux leathers, we offer a cutting service which allows you to save time and money by having your order delivered as cut parts.

Additionally, we also offer a sewing service, once again allowing you to save money by having your leather or faux leather cut and sewn ready for assembly.

Please see enclosed the colour palette, technical information and fire certification for Element.

All our faux leathers have a minimum order quantity of one linear metre.

If you require any samples of our ranges, further information or to place an order, please contact the Sales Office:

+44 (0) 113 252 1014  
[enquiries@yarwoodleather.com](mailto:enquiries@yarwoodleather.com)

**YARWOOD**  
Faux Leather



# Range Information

A unique faux leather, with a metallic look.

Seating, headboards or panelling detail, the Element range consists of beautifully natural tones which add a touch of glamour to any design scheme.

Added Easy To Clean properties mean that most stains can be removed from Element using a simple soap and water solution. Anti-bacterial and anti-fungal properties also mean that Element offers a different finish for environments that need additional hygiene measures.

## Key Facts

- Metallic Finish
- Anti-Bacterial
- Anti-Fungal
- Stain Repellent
- Bleach Cleanable
- REACH Compliant
- Meets OEKO-TEX standards

## Fire Regulations

- Meets Cigarette & Match as standard
- Meets Crib 5 as standard
- Meets IMO Part 8 as standard

Please note that faux leather is manmade and therefore, repeat patterns may be noticeable within the product. Even though it is a manmade product, colour variation can happen from batch to batch and material should be checked thoroughly prior to use or cutting.

# Technical Information

## Application Usage

Healthcare | Hospitality | Marine | Residential | Workplace

Certification on following pages

## Test Results

### Wear Tests

Test	Units	Warp	Weft	Method
<b>Tensile Strength</b>	N	310	350	EN ISO 1421:1998
<b>Tear Resistance</b>	N	55	45	EN ISO 4674-1
<b>Seam Slippage Resistance</b>	mm	3.0	3.0	EN ISO 13936-2: 2004
<b>Abrasion Resistance (Martindale)</b>	No. of Rubs	100,000	100,000	EN ISO 12947-2
<b>Fastness to Light</b>	Grade	5	5	EN ISO 4892-2-2006
<b>Colour Fastness to Rubbing</b>	Wet Rubs	5	5	EN ISO 11640/105 X 12
<b>Colour Fastness to Rubbing</b>	Dry Rubs	5	5	EN ISO 11640/105 X 12

### Material Characteristics

Composition	Width	Weight	Thickness	Phtalate Free
78% PVC 2% PU 20% Poly Viscone	140 cm ± 2cm 55 inches	750g/m2 ± 10%	1.20 mm ± 10%	Pass

### Flammability Tests

	Test	Result
<b>Domestic FR (Cigarette + Match)</b>	BS 5852: Part 1: 1979	Pass
<b>Contract FR (Crib 5)</b>	BS 5852:2006 - Ig source 5	Pass
<b>Marine FR (Indoor Marine Seating)</b>	IMO 2010 FTP Code Annex 1 Part 8	Pass

### Microbiological Tests

	Test	Requirement
<b>Antibacterial Activity</b>	ISO 20743:2013 Staphylococcus aureus (ATCC 6538 Gram(+))	Pass
<b>Antibacterial Activity</b>	ISO 20743:2013 Klebsiella pneumoniae (ATCC 4352 Gram(-))	Pass
<b>Antifungal Activity</b>	AATCC 30:2013	Pass
<b>Colour fastness to rubbing - Wet (anti-urine)</b>	TS EN ISO 11640	Pass
<b>Abrasion Resistance - Wet (anti-urine)</b>	TS EN ISO 5470-2	Pass
<b>Flexing Strength - Wet (anti-urine)</b>	TS EN ISO 5402-1	Pass

# Element Range

Classic neutrals with a metallic look make up the Element Faux Leather range.

Metals and precious stones inspired the colour palette.

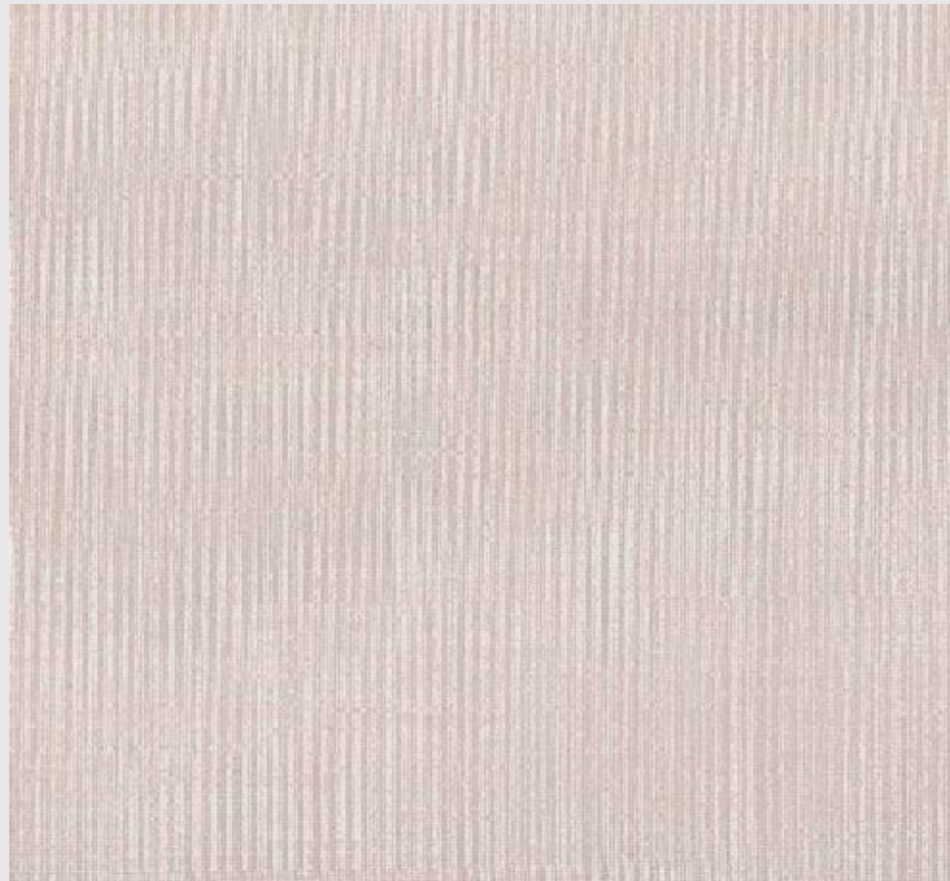
Browns:  
Smoky Quartz, Copper, Brushed Bronze, Jasper, Onyx, Tiger Eye

Pink:  
Rose Quartz

Silver:  
Titanium

White:  
Opal

Please note that faux leather is manmade and therefore, repeat patterns may be noticeable within the product. Even though it is a manmade product, colour variation can happen from batch to batch and material should be checked thoroughly prior to use or cutting.



Rose Quartz  
V ELEM02

Opal



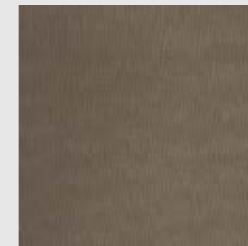
V ELEM01

Titanium

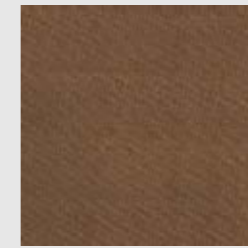


V ELEM03

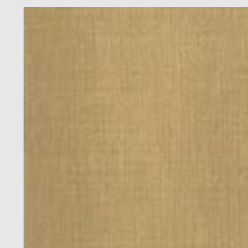
Brushed Bronze



V ELEM08  
Copper

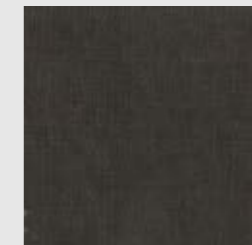


V ELEM05  
Brass

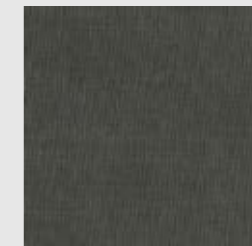


V ELEM04

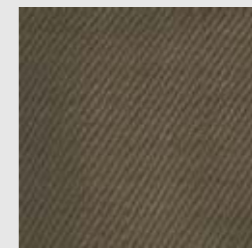
Tiger Eye



V ELEM09  
Onyx



V ELEM10  
Jasper



V ELEM07

Smoky Quartz



V ELEM06

# Using Element

With any product, it is important to ensure the right material is being used for your application.

When upholstered, Element offers a long lasting finish when treated with care.

Element is finished with Easy To Clean properties, meaning most stains can easily be removed by using warm water and soap.

See the following page for a comprehensive care and cleaning guide.

## Using Element in Healthcare Design

Neutral tones with a beautiful finish, add a comforting finish into healthcare seating with Element faux leathers.

Added anti-bacterial and anti-fungal properties means that Element is ready to help create relaxing seating across the healthcare sector. Element is also able to be cleaned with bleach and alcohol, please refer to cleaning and care advice.

## Using Element in Hospitality Design

The metallic look finish of Element allows you to add detail into a design on bar panelling, hotel headboards as well as seating.

As with all Yarwood ranges, Element comes Crib 5 as standard, for Crib 5 certification please see the end of this technical information pack.

## Using Element in Marine Design

Element meets IMO Part 8 fire regulations for indoor marine seating. Use Element throughout the cabin or on-board larger vessels, bring the metallic look into public spaces, bars and restaurants.

For IMO certification please see the end of this technical information pack.

## Using Element in Residential Design

Ottomans, chaise longues or banquette seating, bring a touch of glamour into home seating with Element.

With Easy Clean properties, Element can be cleaned with soap and warm water, meaning common household stains can be treated.

## Using Element in Workplace Design

Bring a more social feel into workplace design, Element is suited to breakout stools and seating, desk panelling or even work canteen areas.

For Crib 5 certification please see the end of this technical information pack.



# Element Care and Cleaning Guide

## Easy to Clean Properties

Added Easy Clean properties mean that most stains can be removed from Element using a simple soap and water solution.

## Stain Resistent Properties

Element is also produced with added stain resistant treatment, this paired with the Easy To Clean properties means that common stains are easily removed and will not dull the look of Element.

## General Care of Element

The biggest enemy to a piece of upholstery is the build-up of material on the surface of the faux leather. If material is allowed to build up, when you move against the surface of the faux leather instead of only rubbing material against the surface, the faux leather grabs any free material and rubs said material under force and pressure against the surface of the faux leather.

This can cause severe abrasion of the surface. We recommend vacuuming the faux leather as this removes the dirt particles and prevents them abrading against the surface of the faux leather. Dusting with a cloth is also a suitable process.

## Wet Stains

All stains should be removed immediately.

The simple answer is to simply remove any excess liquid or puddles with a damp lint free cloth.

### Common stains

E.g. mascara, felt tip pen, crayon, chocolate, body lotions.

Remove excess spill with a damp cloth. Clean with a 1:1 mix of alkaline soap and water.

Then, rinse with water.

## Disinfecting and Severe stains

Element can be safely disinfected with either a 1:10 ratio of bleach in water, or a 1:1 ratio of an ethanol based Alcohol in water.

### Severe stains

E.g. blood, urine, lipstick

Remove excess spill with a damp cloth.

Clean with a 1:10 mix of bleach and water, then rinse with water.

## Other Persistent Stains

Remove excess spill with a damp cloth.

Clean with a 1:1 mix of alcohol and water, then rinse with water.

If in doubt, please get in touch for guidance.





## TEST REPORT

**Client:** Yarwood Leather Ltd  
 Treefield Industrial Estate  
 Gelderd Road  
 Gildersome  
 Leeds  
 LS277JU

**Entry No:** 113653-01

**Date received:** 08/11/2019

**Client's Description:** Faux Leather: Element

**Test Required:** Flammability in accordance with BS 5852 ignition source 5

**Pre-treatment:** None

**Conditioning:** A minimum of 96 hours at 50+/-5% Relative Humidity, 23+/-2°C

**Date Tests Completed:** 14/11/2019

**Method of Test:** BS 5852: 2006 Clause 11 (composites)

The following test results relate only to the ignitability of the combination of materials under the particular conditions of test; they are not intended as a means of assessing the full potential fire hazard of the materials in use.

Ignition Source	Observations	Result
5 (Wood Crib)	Flaming ceased within the specified ten minute period after ignition of the crib and no progressive smouldering occurred.	Pass

**Note:** 35 kg/m<sup>3</sup> CMHR Foam was used as the filling

-----End of Document-----

*This is hereby certified to be a correct return of the tests made of the items referred to herein*



Daniel Young  
 Senior Technologist  
 15 November 2019

- ❖ Unless instructed otherwise by the client sample remnants will be disposed of after 28 days.
- ❖ Opinions and interpretations expressed herein are outside the scope of UKAS accreditation.
- ❖ Uncertainty budgets for test methods contained within this report are available on request.
- ❖ The results have been obtained for the above test are due to the allowances that have been made based on the uncertainty of the measurement for this test and its associated measurements.

This Certificate relates only to the sample received and, unless that sample has been drawn by the staff of this laboratory, or its agent, and endorsed accordingly, any application of the result to a bulk quantity or other material is entirely the responsibility of the client.



1104



## TEST REPORT

**Client:** Yarwood Leather Ltd  
 Treefield Industrial Estate  
 Gelderd Road  
 Gildersome  
 Leeds  
 LS277JU

**Entry No:** 113653-02

**Date received:** 08/11/2019

**Client's Description:** Faux Leather: Element

**Test Required:** Flammability in accordance with IMO 2010 FTP CODE ANNEX1 PART 8

**Pre-treatment:** None

**Conditioning:** A minimum of 88 hours at 50+/-20% Relative Humidity, 20+/-5°C

**Date Tests Completed:** 14/11/2019

The following test results relate to the behaviour of the test specimens of a product under the particular conditions of the test; they are not intended to be the sole criterion for assessing the potential fire hazard of the product in use.

Ignition Source	Observations	Result
Smouldering cigarette	No flaming or progressive smouldering was observed within one hour of placement of the cigarettes.	Pass
Propane flame	Flaming ceased within the specified two minute period after removal of the propane flame and no progressive smouldering occurred.	Pass

**Note:** A 20-22kg/m<sup>3</sup> non-fire retardant polyurethane foam was used as the filling.

-----End of Page-----

*This is hereby certified to be a correct return of the tests made of the items referred to herein*



Daniel Young  
 Senior Technologist  
 15 November 2019

- ❖ Unless instructed otherwise by the client sample remnants will be disposed of after 28 days.
- ❖ Opinions and interpretations expressed herein are outside the scope of UKAS accreditation.
- ❖ Uncertainty budgets for test methods contained within this report are available on request.
- ❖ The results have been obtained for the above test are due to the allowances that have been made based on the uncertainty of the measurement for this test and its associated measurements.

This Certificate relates only to the sample received and, unless that sample has been drawn by the staff of this laboratory, or its agent, and endorsed accordingly, any application of the result to a bulk quantity or other material is entirely the responsibility of the client.



1104





**Client:** Yarwood Leather Ltd

**Entry No:** 113653-02

**ANNEX**

name and address of the manufacturer/supplier, if known	Yarwood Leather Ltd Treefield Industrial Estate Gelderd Road Gildersome Leeds LS277JU
type of the furniture, e.g., seat, sofa, office chair, etc	Unknown
name and/or identification of the product tested	Faux Leather: Element
description of the sampling procedure, where relevant	Unknown
fabric material: materials such as wool, nylon, polyester, etc., and its composite ratio	Unknown
composition of weave: such as plain, weave, twilled	Unknown
density (number/inch): the number of threads per inch in both warp and weft	Unknown
yarn number count	Unknown
thickness of the fabric in mm	Unknown
mass: weight per unit area (g/m <sup>2</sup> )	Unknown
colour and tone: if the product has a pattern, the representative colour shall be described	Unknown
fabric fire retardant treatment	Unknown
filling material (name of the manufacturer, type designation)	Foam4sport
density: weight per unit volume (kg/m <sup>3</sup> ) and for products where thickness is difficult to measure exactly square density (g/m <sup>2</sup> )	20-22 kg/m <sup>3</sup> polyurethane foam
filling fire retardant treatment, if any	non-fire retardant
dimensions and mass of cigarette used	0.90g and 0.89g 68mm x 8mm
smouldering rate of the cigarette used	10minutes 21 seconds per 50mm
extent of damage (burning and/or char) of specimen measured from the ignition source	72mm x 21mm & 70mm x 25mm
occurrence of progressive smouldering	No

-----End of Document-----

## Get in touch

Treefield Industrial Estate  
Gelderd Road  
Morley, Leeds  
LS27 7JU  
UK

t: +44 (0) 113 252 1014  
f: +44 (0) 113 252 7391  
e: [sales@yarwoodleather.com](mailto:sales@yarwoodleather.com)  
w: [www.yarwoodleather.com](http://www.yarwoodleather.com)  
s: [@yarwoodleather](https://www.instagram.com/yarwoodleather)