

YARWOOD
Leather

Technical Data Pack: Aneurin

Faux Leather

Page 1:	Working with Yarwood Leather
Page 2:	Range Information
Page 3:	Colour Offering
Page 4:	Technical Information
Page 5:	Fire Certification: Crib 5
Page 6:	Fire Certification: Crib 5 continued
Page 7:	Care Information

Working with Yarwood Leather

We look forward to working with you as your leather supplier, here are the main advantages of working with us:

Yarwood provides a wide range of leather and faux leather ranges which are suitable for the domestic, aviation, automotive, contract and office upholstery sectors.

Yarwood has its own Tannery & Finishing Plant based in Italy, giving us total control of production & matching services. This also allows us to trace all of our hides from source to distribution. Both Yarwood Leather and our Italian Tannery are accredited to ISO9001.

All of our leathers are tested in our on-site laboratory, testing includes flex, rub, colour and abrasion.

As well as supplying leather, we offer a cutting service which allows you to save time and money by having your leather order delivered as cut parts.

Additionally, we also offer a sewing service, once again allowing you to save money by having your leather cut and sewn ready for assembly.

If you require any samples of our ranges please contact the Sales Office:

T: 0113 252 1014

E: enquiries@yarwoodleather.com

Range Information

Treated with our Sanitized™ anti-bacterial process, Aneurin is the perfect synthetic option for healthcare seating applications.

The Aneurin range starts with the high-performance base layer, a textile material that is packed with strength and durability. The base layer has great torsional stability resulting in very high tear strength; we've also made it less susceptible to edge fraying and stitch hole tears. The base layer is flame retardant to the UK Crib5 standard and also meets the much higher M1 flame test from France.

The performance doesn't stop there, with high performance engineering in the top coat system too. The print is designed to be as flat as possible to greatly reduce the areas that bacteria and other contaminants can build up in. The gently contoured finish still ensures high levels of grip for the occupant to avoid slipping over the surface. The high performance finish can resist all manner of stains and spills and is easy to clean in the event of any soiling. Aneurin can be wet or dry cleaned and is also suitable for cleaning with alcohol to ensure total bacterial elimination. Finally, the top coat is treated with our Sanitized™ anti-bacterial process to ensure that the surface is as inhospitable as possible to bacteria and even multidrug resistant strains.

Whilst the Aneurin range is designed and engineered for healthcare use, its high tech properties also make it ideal for outdoor and marine use, as it resists salt water.

Colour Offering

White



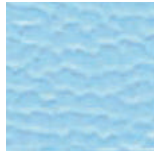
V NATU01

Yellow



V NATU06

Light Blue



V NATU07

Turquoise



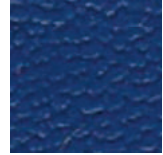
V NATU09

Royal Blue



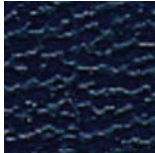
V NATU04

Blue



V NATU13

Dark Blue



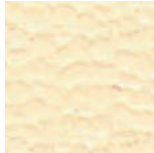
V NATU14

Red



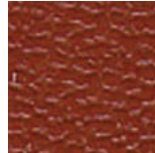
V NATU10

Ivory



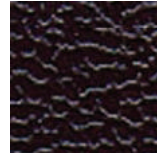
V NATU03

Chestnut



V NATU11

Dark Brown



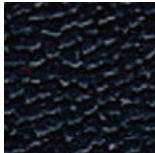
V NATU12

Grey



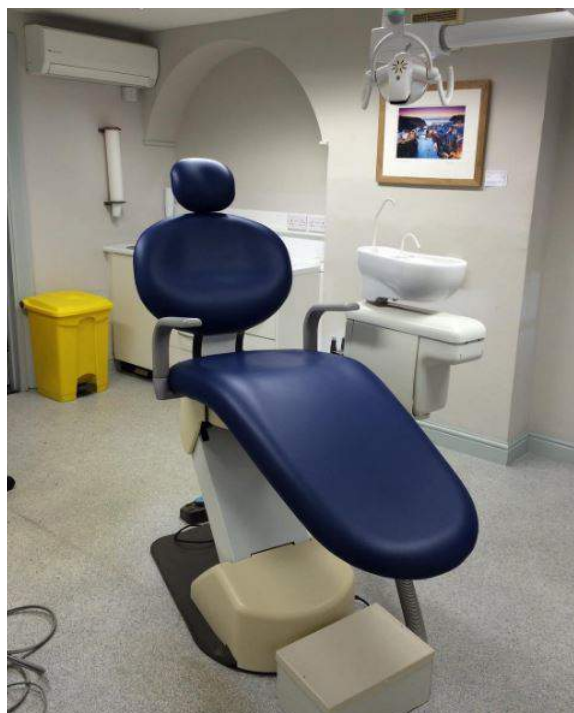
V NATU05

Black



V NATU02

Featured Project



Technical Information

Application Usage



Wear Tests

Test	Units	Warp	Weft	Method
Tensile Strength	N	310+15	200+1	EN ISO 13934-1 UNE-EN ISO 1421
Tear Resistance	N	25+1	15+1	EN ISO 13937-3
Seam Slippage Resistance	mm	<4	<4	EN ISO 13938-2: 2004
Peeling Resistance	Grade	5	5	EN ISO 12945-2: 2000
Flex Endurance	No. of Flexes	>100,000	>100,000	ISO 7854: 1995
Abrasion Resistance	No. of Cycles	>45,000	>45,000	EN ISO 12947-1y2: 1999
Bagging / Poaching	mm	6.78	6.76	NF G 35 104
Fastness to Light	Grade	7	7	EN ISO 105 B02

Staining and Cleaning Tests

Test Substance	Chocolate	Coffee	Orange Juice	Ketchup	Ballpoint Pen	Oil
When Cleaned with Detergent	5	4-5	5	4	4-5	5
When Cleaned with Alcohol	Alcohol 70°C	Alcohol 70°C	Alcohol 70°C	Domestic Bleach	Domestic Bleach	Domestic Bleach
	Blood	Urine	Sweat	Saliva		
Resistance of Materials to Penetration of Human Fluids	Pass	Pass	Pass	Pass	ASTM F - 1670-96	
Resistance of Materials to Penetration by Salt Water	Pass				ASTM F - 1670-96	

Material Characteristics

Weight	Thickness	Width	Textile	Synthetic
690+20 g/m ²	1.15+1.20mm	140-145cm	10+5 % - 41% COT / 59% PE	90+5 % - 100% PVC

Flammability Tests

	Test	Method
Assessment of Ignitability of Upholstered Furniture	UNE - EN 1021: 1y2	UNE 23 727-90 IR
Assessment of Ignitability of Upholstered Furniture	BS 5852 Crib 5 Smouldering cigarette Butane flame equivalent to match flame	UNE 23 727-90 IR
Assessment of Ignitability of Upholstered Furniture	Flammability Test NFP 92-501 - M1	UNE 23 727-90 IR



TEXTILE LABORATORY SERVICES LIMITED

P.O. Box 50, Wharfebank Business Centre, Ilkley Road, OTLEY, LS21 3XD, United Kingdom

Tel: +44 (0)1943 850967 Fax: +44 (0)1943 850965 Email: info@tls-ltd.demon.co.uk

Regd. Office: 3 Victoria Road, Guiseley, England - No.1966147



TEST CERTIFICATE

17992/7

SAMPLE INFORMATION

Client **Yarwood Leather Limited**

Treefield Industrial Estate
Gelderd Road
Gildersome
LEEDS
LS27 7JU

Fabric Reference **Nautico**
Descriptions are information
supplied by the client

Dimensions (approx) **178cm by 139cm full width**

Sample received **15/3/2006**

Testing to Section 4 of BS 5852 : 1990 Assessment of the ignitability of upholstered seating by Smouldering and Flaming sources - Source 5 (Crib 5)

PRE-TREATMENT

The material was subjected to a water soak according to BS 5651 : 1989 clause 3

CONDITIONING

All materials used were conditioned and tested in the environments specified in Clause 5 of BS 5852 : 1990 Methods of test for the ignitability of upholstered composites for seating by flaming sources.

TESTING

Test results relate only to the sample tested. The material was tested according to **BS 5852 : 1990 Methods of test for the ignitability of upholstered composites for seating by flaming sources using Source 5 (Crib 5)**

Foam used:

The sample was tested over combustion modified polyurethane foam with a density of approximately 35kg/m³, reference RS35H

It should be noted that the results of BS 5852 : Part 2 : 1982 relate only to the ignitability of the combination of materials under test; they are not intended as a means of assessing the full potential fire hazard of the materials in use

The test results are shown in the tables below:



TEXTILE LABORATORY SERVICES LIMITED

P.O. Box 50, Wharfebank Business Centre, Ilkley Road, OTLEY, LS21 3XD, United Kingdom

Tel: +44 (0)1943 850967 Fax: +44 (0)1943 850965 Email: info@tls-ltd.demon.co.uk

Regd. Office: 3 Victoria Road, Guiseley, England - No.1966147



Specimen no	1	2
Flaming criteria		
Visible flames after 10 mins	No	No
Escalating flaming combustion	No	No
Testing assembly consumed	No	No
Flames to extremities	No	No
Flames through thickness	No	No
Progressive smouldering on final inspection	No	No
(All distance criteria exclude vertical)		
Any "Yes" in smouldering or flaming criteria = Ignition		
Specimen result (Ignition or Non-ignition)	Non-Ignition	Non-Ignition

CONCLUSION

Since both specimens show Non-ignition the combination of materials is designated NI/5 (ie PASS)

Signed:.....

J. M. Brown C Chem MRSC C Text FTI
Managing Director & Authorised Signatory

Checked by:.....

Care Information

Cleaning & Care Advice

1. Remove abrasive material

The biggest enemy to a piece of upholstery is the build-up of material on the surface of the vinyl. If material is allowed to build up, when you move against the surface of the vinyl instead of only rubbing fabric material against the surface, the fabric grabs any free material and rubs said material under force and pressure against the surface of the vinyl. This can cause severe abrasion of the surface. We recommend vacuuming the vinyl, as this removes the dirt particles and prevents them abrading against the surface of the vinyl. Dusting with a cloth is also a suitable process.

2. What to do with wet stains

- a. The simple answer is to simply remove any excess liquid or puddles with a damp lint free cloth (such as a Yarwood Leather cleaning cloth).
- b. DO NOT use household cleaning products, anything with a solvent base will solubilize the finish and damage the vinyl.
- c. For watery or oily stains, absorb with a paper-like tissue or an absorbing tissue until it is completely absorbed. For fat or ball-pen stains, clean with an absorbent tissue soaked in a warm, soapy water.

