

Colorado

Technical Information Pack

Hospitality

Marine

Residential

Workplace

YARWOOD

Faux Leather

Colorado Faux Leather Technical Information Pack

We look forward to working with you as your faux leather supplier, here are the main advantages of working with us:

Accredited to ISO9001, Yarwood provides a wide range of leather and faux leather ranges which are suitable for the domestic, aviation, automotive, contract and office upholstery sectors.

As well as supplying leather and faux leathers, we offer a cutting service which allows you to save time and money by having your leather order delivered as cut parts.

Additionally, we also offer a sewing service, once again allowing you to save money by having your leather or faux leather cut and sewn ready for assembly.

Please see enclosed the colour palette, technical information and fire certification for Colorado.

All our faux leathers have a minimum order quantity of one linear metre.

If you require any samples of our ranges, further information or to place an order, please contact the Sales Office:

+44 (0) 113 252 1014
enquiries@yarwoodleather.com

YARWOOD
Faux Leather



Range Information

Colorado provides a subtle two tone leather look finish over a timeless colour palette, soft to the touch and perfect for enhancing any interior.

This range presents a distressed leather look in a variety of commercial colours. As with all Yarwood upholstery products, Colorado is fire retardant to contract level Crib5 as standard and also passes the IMO 8 marine fire standard for indoor seating.

Key Facts

- Distressed leather look
- Soft Feeling handle
- REACH compliant
- Meets OEKO-TEX standards

Fire Regulations

- Meets Cigarette & Match as standard
- Meets Crib 5 as standard
- Meets IMO Part 8 as standard

Please note that faux leather is manmade and therefore, repeat patterns may be noticeable within the product. Even though it is a manmade product, colour variation can happen from batch to batch and material should be checked thoroughly prior to use or cutting.

Technical Information

Application Usage

Hospitality | Marine | Residential | Workplace

Certification on following pages

Test Results

Wear Tests

Test	Units	Warp	Weft	Method
Tensile Stength	N	683	476	EN ISO 13934-1 UNE-EN ISO1421
Tear Resistance	N	102.1	59.1	EN ISO 4674-1
Seam Slippage Resistance	mm	3.0	3.0	EN ISO 13936-2: 2004
Abrasion Resistance	No. of Cycles	100,000	100,000	EN ISO 5470-2 (wool)
Fastness to Light	Grade	5	5	EN ISO 105 B02
Colour Fastness to Rubbing	Wet Rubs	5	5	EN ISO 105 X 12
Colour Fastness to Rubbing	Dry Rubs	4-5	4-5	EN ISO 105 X 12

Material Characteristics

Composition	Width	Weight	Thickness
Surface 100% PU Base 81% PES 15% CO 4% VI	140 cm ± 2cm 55 inches	630g/lm ± 10%	0.9 mm ± 10%

Flammability Tests

		Test	Result
Domestic FR	(Cigarette + Match)	BS 5852: Part 1: 1979	Pass
Contract FR	(Crib 5)	BS 5852:2006 - Ig source 5	Pass
Marine FR	(Indoor Marine Seating)	IMO 2010 FTP Code Annex 1 Part 8	Pass

Using Colorado

With any product, it is important to ensure the right material is being used for your application.

When upholstered, Colorado offers a long lasting finish when treated with care.

Fire Regulations

- Meets Cigarette & Match as standard
- Meets Crib 5 as standard
- Meets IMO Part 8 as standard

See the following page for a comprehensive care and cleaning guide.

YARWOOD
Faux Leather

Using Colorado in Hospitality Design

With a two tone distressed look, Colorado's colour palette will suit any type of seating in bars, restaurants and hotels.

As with all Yarwood ranges, Colorado comes Crib 5 as standard, for Crib 5 certification please see the end of this technical information pack.

Using Colorado in Marine Design

As with all our faux leathers, Colorado meets IMO Part 8 fire regulations which means it is suitable for all indoor marine seating which can include public spaces or cabins onboard larger cruise liners

For IMO certification please see the end of this technical information pack.

Using Colorado in Residential Design

Home office seating, a cosy snug sofa or bedroom headboards, Colorado is a versatile product which can stand out anywhere in the home.

For Cigarette + Match Certification please see the end of this technical information pack.

Using Colorado in Workplace Design

Colorado can also be used in for executive suites, breakout seating and reception areas. It's so soft to the touch, you won't want to leave your seat.

For Crib 5 certification please see the end of this technical information pack.



Colorado Range

A combination of neutral brown, cool greys and vibrant shades of red make up the Colorado faux leather range.

Black:
Black

Browns:
Dark Bown, Siena, Marrone, Cuoio and Terra

Reds:
Rosso and Bordeaux

Neutrals:
Savana and Sand

Greys:
Anthracite, Elephant, Light Grey and Silver

Please note that faux leather is manmade and therefore, repeat patterns may be noticeable within the product. Even though it is a manmade product, colour variation can happen from batch to batch and material should be checked thoroughly prior to use or cutting.

Black



V COLO14

Rosso



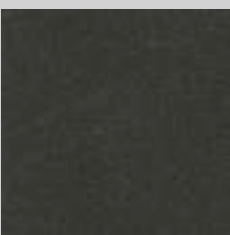
V COLO03

Bordeaux



V COLO06

Dark Brown



V COLO09

Anthracite



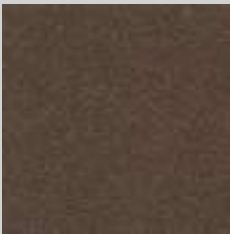
V COLO11

Siena



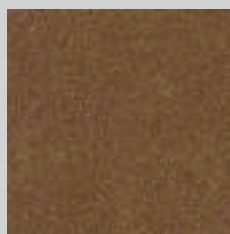
V COLO07

Marrone



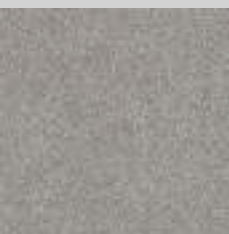
V COLO08

Cuoio



V COLO05

Light Grey



V COLO12

Elephant



V COLO13

Terra



V COLO04

Savana



V COLO02

Sand



V COLO01



Silver V COLO10

Colorado Care and Cleaning Guide

Regular care is important for keeping your seating looking its best.

If in doubt, please get in touch for guidance.

General Care of Colorado

The biggest enemy to a piece of upholstery is the build-up of material on the surface of the faux leather. If material is allowed to build up, when you move against the surface of the faux leather instead of only rubbing material against the surface, the faux leather grabs any free material and rubs said material under force and pressure against the surface of the faux leather.

This can cause severe abrasion of the surface. We recommend vacuuming the faux leather, as this removes the dirt particles and prevents them abrading against the surface of the faux leather. Dusting with a cloth is also a suitable process.

Wet Stains

All stains should be removed immediately.

The simple answer is to simply remove any excess liquid or puddles with a damp lint free cloth.

Common stains

E.g. mascara, felt tip pen, crayon, chocolate, body lotions.

Remove excess spill with a damp cloth. Clean with a neutral soap and water using smooth, circular movements. Then, rinse with water.



TEST REPORT

Client: Yarwood Leather Ltd
Treefield Industrial Estate
Gelderd Road
Gildersome
Leeds
LS277JU

Entry No: 108937

Date received: 19/03/2019

Client's Description: Sample of leather: Colorado

Test Required: Flammability in accordance with The Furniture and Furnishings (Fire) (Safety) Regulations 1988 and Amendments Schedule 4 Part I and Schedule 5 Part I

Pre-treatment: None

Conditioning: A minimum of 96 hours at 50+/-20% Relative Humidity, 20+/-5°C

Date Tests Completed: 10/04/2019

Method of Test: BS 5852: Part 1: 1979

The following test results relate only to the ignitability of the combination of materials under the particular conditions of test; they are not intended as a means of assessing the full potential fire hazard of the materials in use.

Ignition Source	Observations	Result
0 (cigarette)	No flaming or progressive smouldering was observed within one hour of placement of the cigarettes.	PASS
1 (butane flame)	No flaming or progressive smouldering was observed after removal of the butane flame.	PASS

Note: A 20-22 kg/m³ non fire retardant polyurethane foam was used as the filling for the tests.

Comments

On the basis of the tests carried out this sample of leather meets the requirements of Schedule 4 Part I and also meets Schedule 5 Part I.

-----End of Document-----

This is hereby certified to be a correct return of the tests made of the items referred to herein



Daniel Young
Senior Technologist
11 April 2019

- ❖ Unless instructed otherwise by the client sample remnants will be disposed of after 28 days.
- ❖ Opinions and interpretations expressed herein are outside the scope of UKAS accreditation.
- ❖ Uncertainty budgets for test methods contained within this report are available on request.
- ❖ The results have been obtained for the above test are due to the allowances that have been made based on the uncertainty of the measurement for this test and its associated measurements.

This Certificate relates only to the sample received and, unless that sample has been drawn by the staff of this laboratory, or its agent, and endorsed accordingly, any application of the result to a bulk quantity or other material is entirely the responsibility of the client.



**TEST REPORT**

Client: Yarwood Leather Ltd
Treefield Industrial Estate
Gelderd Road
Gildersome
Leeds
LS277JU

Entry No: 106281

Date received: 29/01/2019

Client's Description: Sample of vinyl: Colorado

Test Required: Flammability in accordance with IMO 2010 FTP CODE ANNEX1 PART 8

Pre-treatment: None

Conditioning: A minimum of 88 hours at 50+/-20% Relative Humidity, 20+/-5°C

Date Tests Completed: 12/02/2019

The following test results relate to the behaviour of the test specimens of a product under the particular conditions of the test; they are not intended to be the sole criterion for assessing the potential fire hazard of the product in use.

Ignition Source	Observations	Result
Smouldering cigarette	No flaming or progressive smouldering was observed within one hour of placement of the cigarettes.	PASS
Propane flame	No flaming or progressive smouldering was observed after removal of the propane flame.	PASS

Note: A 20-22kg/m³ non-fire retardant polyurethane foam was used as the filling.

-----End of Page-----

This is hereby certified to be a correct return of the tests made of the items referred to herein



Daniel Young
Senior Technologist
12th February 2019

- ❖ Unless instructed otherwise by the client sample remnants will be disposed of after 28 days.
 - ❖ Opinions and interpretations expressed herein are outside the scope of UKAS accreditation.
 - ❖ Uncertainty budgets for test methods contained within this report are available on request.
- This Certificate relates only to the sample received and, unless that sample has been drawn by the staff of this laboratory, or its agent, and endorsed accordingly, any application of the result to a bulk quantity or other material is entirely the responsibility of the client.



1194



Client: Yarwood Leather Ltd

Entry No: 106281

ANNEX

name and address of the manufacturer/supplier, if known	Yarwood Leather Ltd Treefield Industrial Estate Gelderd Road Gildersome Leeds LS277JU
type of the furniture, e.g., seat, sofa, office chair, etc	Unknown
name and/or identification of the product tested	Colorado
description of the sampling procedure, where relevant	Unknown
fabric material: materials such as wool, nylon, polyester, etc., and its composite ratio	Unknown
composition of weave: such as plain, weave, twilled	Unknown
density (number/inch): the number of threads per inch in both warp and weft	Unknown
yarn number count	Unknown
thickness of the fabric in mm	Unknown
mass: weight per unit area (g/m ²)	Unknown
colour and tone: if the product has a pattern, the representative colour shall be described	
fabric fire retardant treatment	Unknown
filling material (name of the manufacturer, type designation)	Sherlock Foams 21/130 White
density: weight per unit volume (kg/m ³) and for products where thickness is difficult to measure exactly square density (g/m ²)	20-22kg/m ³
filling fire retardant treatment, if any	Non FR
dimensions and mass of cigarette used	0.86g and 0.87g 68mm x 8mm
smouldering rate of the cigarette used	9minutes 2seconds per 50mm
extent of damage (burning and/or char) of specimen measured from the ignition source	Match: 93x19 mm and 121x21 mm Cigarette: 4x5 mm and 10x6 mm
occurrence of progressive smouldering	No progressive smouldering occurred

-----End of Document-----



TEXTILE LABORATORY SERVICES LIMITED

Wira House, West Park Ring Road, LEEDS, LS16 6QL
Tel: +44(0)113 2395230 Company number 9537454 registered in England & Wales. Email: TLS@bttg.co.uk



52387-1

Client: Elastron
Rua de Feiteira, 294/304
4415-556 Grijo VNG
Portugal.

Sample Information:

Fabric reference: Colorado
(Descriptions are information supplied by client)

Sample received: 21/9/2016

Testing BS 5852:Clause 11:2006 (2011) Assessment of the ignitability of upholstered seating by Smouldering and Flaming sources – Source 5 (Crib 5)

Date of test: 26/9/2016

Pre-Treatment

The material was subjected to the water soak procedure according to BS 5852:Annex E:2006 (2011).

Conditioning

The sample was conditioned and tested in the environments specified in Clause 10 of BS 5852:2006 (2011).

Testing

The material was tested according to BS 5852:2006 (2011) Methods of test for the ignitability of upholstered composites for seating by flaming sources using Source 5 (Crib 5).

The sample was tested at 20°C and 61% r.h.

Foam Used

The sample was tested over combustion modified polyurethane foam with a density of approximately 36kg/m³.



TEXTILE LABORATORY SERVICES LIMITED

Wira House, West Park Ring Road, LEEDS, LS16 6QL
Tel: +44(0)113 2395230 Company number 9537454 registered in England & Wales. Email: TLS@btg.co.uk



Results

The test results are shown in the tables below:-

The following test results relate only to the ignitability of the combination of upholstery composites under the particular conditions of test stated; they are not intended as a means of assessing the full potential fire hazard of the materials or products in use.

	Specimen 1	Specimen 2
Time of Ignition (s)	59	31
Time of Flame Extinction (s)	273	270
Time of Smoke Extinction (s)	542	465
Time of cover split	DNO	DNO

Extent of damage (mm) - Seat

Width	100	95
Length	80	80
Depth	45	40

Extent of damage (mm) - Back

Width	105	100
Length	330	315
Depth	30	35

Melting	No	No
Dripping	No	No
Charring	Yes	Yes
Comments and Observations		

Specimen Result (Ignition or Non-ignition)	Non-Ignition	Non-Ignition
--	--------------	--------------

Abbreviations

ME – Manually extinguished
DNS – Material did not split
BTT – Burnt through thickness of foam

EC – Escalating combustion
DNO – Did not observe time of event
BTE = Burnt to extremities

Conclusion

The results indicate "Non-ignition" of the materials and the test is designated **NI/5** (ie. Pass)

Uncertainty of measurement has not been taken into account when presenting the test result. The relevant uncertainty value is included as an annex which forms an integral part of the report.

Reported by: A. Shute
A. Shute
Fire Technician

Countersigned By: P Doherty
P Doherty
Operational Head

Our Reference: 52387-1

Date: 27/9/2016

Page 2 of 3



TEXTILE LABORATORY SERVICES LIMITED

Wira House, West Park Ring Road, LEEDS, LS16 6QL
Tel: +44(0)113 2395230 Company number 9537454 registered in England & Wales. Email: TLS@btg.co.uk



Uncertainty Budget - Annex

The overall uncertainty budget for BS 5852:2006 (2011) is as follows:-

Measurements:	$\pm 2\text{mm}$
Timings:	± 2 seconds.

Get in touch

Treefield Industrial Estate
Gelderd Road
Morley, Leeds
LS27 7JU
UK

t: +44 (0) 113 252 1014
f: +44 (0) 113 252 7391
e: sales@yarwoodleather.com
w: www.yarwoodleather.com
s: [@yarwoodleather](https://www.instagram.com/yarwoodleather)